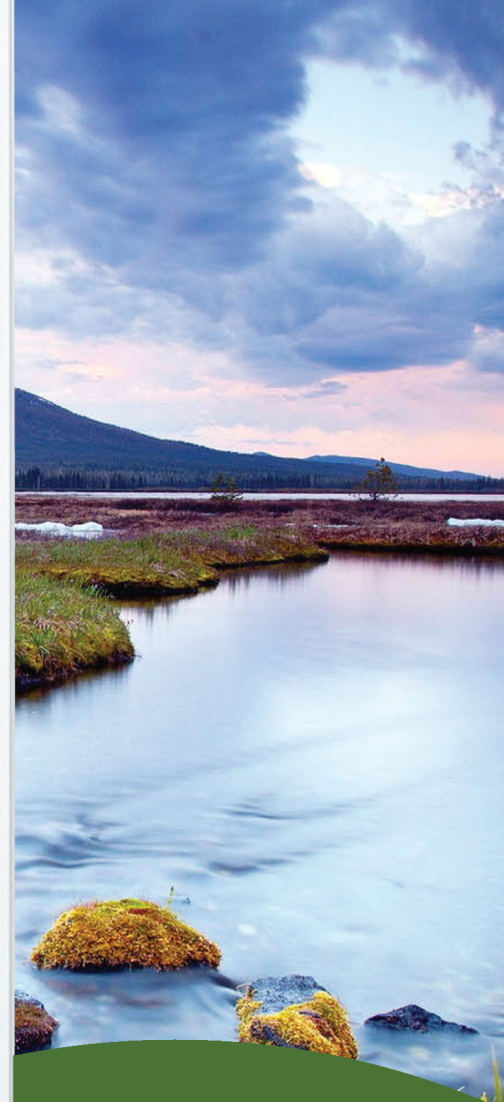
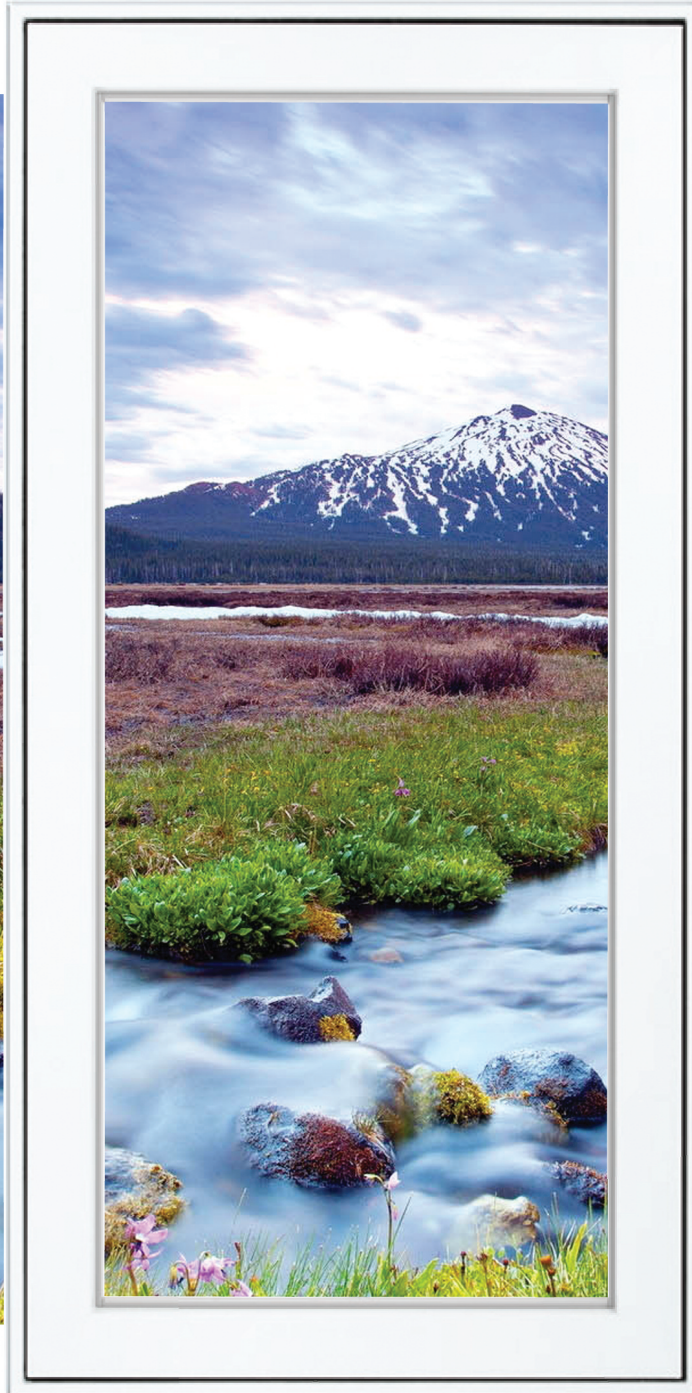
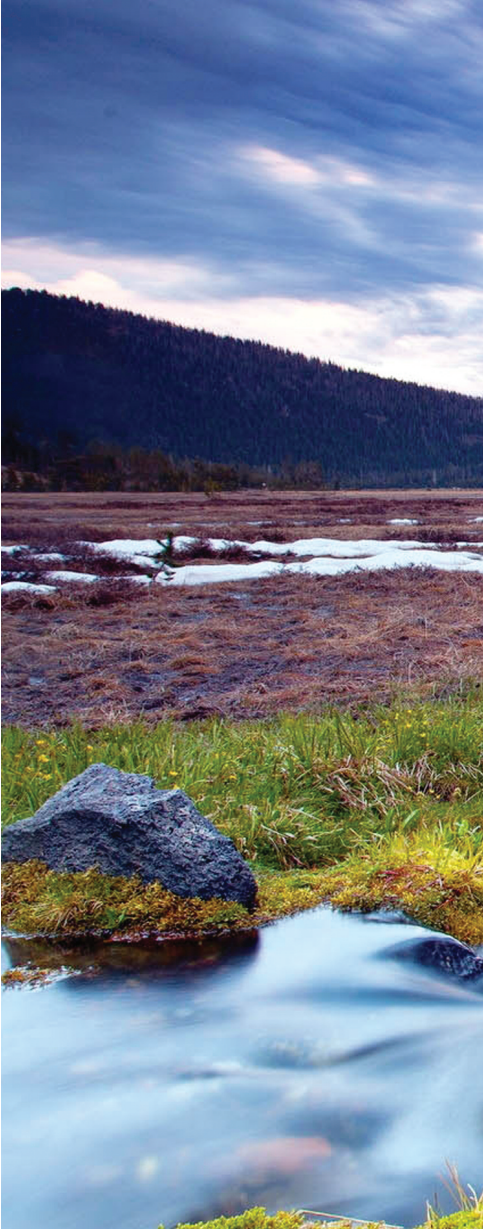


PVC  
3 1/4"

# CASEMENT AWNING





## PVC 3 1/4"

# CASEMENT AWNING

## CHARACTERISTICS

1. Multi-chamber welded PVC frame for better insulation.
2. Triple weather strip PVC welded sash.
3. Virgin PVC extruded profiles provide a glossy finish and facilitate cleaning.
4. Folding operator handle giving maximum clearance for blinds and shutters.
5. Multipoint locking system giving a tight seal when engaged.
6. Washability package hinges allow for easy exterior access for cleaning.
7. Simple contemporary design with clean lines.
8. 3/4" and 1/2" integrated return groove for multiple jamb options.
9. Easily removed spring loaded screen.

## OPTIONS

- A. Double or triple glass.
- B. Multitude of interior or exterior mouldings.
- C. Exclusive TrueWood real wood interior package - available in Oak or Pine.
- D. Various internal grille shapes, colours and patterns along with external mounted SDL grilles.

## PERFORMANCES

CASEMENT	NAFS-08	CSA A440-00
Air filtration/exfiltration:	A3	A3
Water resistance:	100	B7
Design Pressure:	DP75	C5
Primary designator:	LC-PG75 800 x 1500 (32 x 59) Type C	

AWNING	NAFS-08	CSA A440-00
Air Infiltration/exfiltration:	A3	A3
Water resistance:	100	B7
Design Pressure:	PC50	C3
Primary designator:	LC-CP50 1200 x 800 (47 x 32) Type AP	



Folding & Nesting Handle



Brantford: 519-753-3939  
Kitchener: 519-569-8700  
Hamilton: 905-972-9988  
Oakville: 905-567-5900  
Toll Free: 866-757-1241



76 Middleton St, Brantford, ON, N3S 7V7  
info@caymanwindows.com  
www.caymanwindows.com